

# WHAT IS THE EARTH MADE OUT OF?



THE 4 EARTH MATERIALS ARE:

- 1.
- 2.
- 3.
- 4.

## MATCHING

DRAW A LINE FROM THE WORD TO ITS PICTURE

AIR



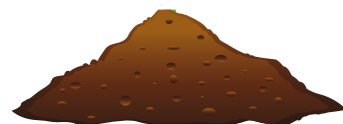
SOIL



ROCK



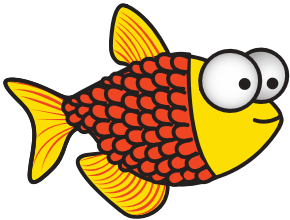
WATER



# WHERE WOULD YOU FIND...

FOR EACH QUESTION, CIRCLE THE  
RIGHT ANSWER.

WHERE WOULD YOU FIND A FISH?



Air  
Soil

Water  
Rock

WHERE WOULD YOU FIND A PLANT?



Air  
Soil

Water  
Rock

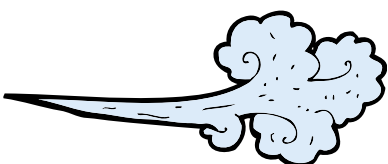
WHERE WOULD YOU FIND A FOSSIL?



Air  
Soil

Water  
Rock

WHERE WOULD YOU FIND WIND?



Air  
Soil

Water  
Rock

# ROCK OR FOSSIL???

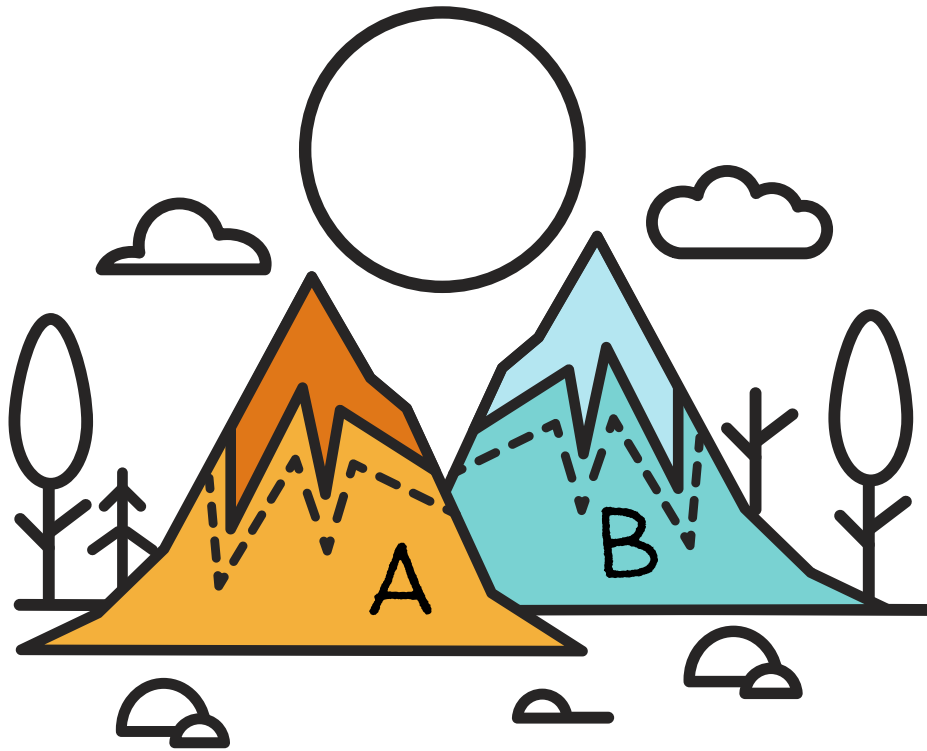
PUT A ☐ AROUND ROCKS.

PUT A ☐ AROUND FOSSILS.

REMEMBER,  
FOSSILS HAVE  
A PATTERN!



MOUNTAIN A IS MADE OF SOIL.  
MOUNTAIN B IS MADE OF ROCK.



WHICH MOUNTAIN WOULD HAVE MORE  
PLANTS? WHY?

WHICH MOUNTAIN WOULD HAVE MORE  
FOSSILS? WHY?

IF MOUNTAIN A IS 5 FEET TALL AND  
MOUNTAIN B IS 4 FEET TALL, HOW TALL  
ARE THEY TOGETHER?